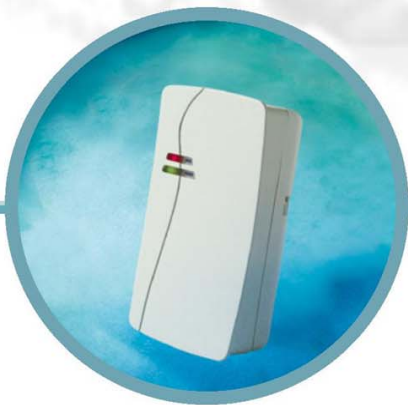




Web based remote control for PowerMax+

Be Connected



User Manual

Version 1.0



Visonic[®]

For a smart and secure lifestyle

Table of Contents

Table of Contents	2
Chapter 1: Getting Started	5
Introduction.....	5
Installation	6
Package Contents.....	6
System Requirements	7
Installation Procedure	7
Chapter 2: Installing the Visonic PowerLink.....	8
Hardware Installation.....	8
Step 1: Connecting the CAM1000 Cameras to the Visonic PowerLink	8
Step 2: Connecting the Visonic PowerLink to the Home Router	9
Step 3: Connecting the Visonic PowerLink to the PowerMax+.....	9
Router Configuration	11
Step 1: Determining the IP Addresses of Home Router and Visonic PowerLink.....	11
Step 2: Logging In to the Router	12
Step 3: Port Forwarding Configuration	12
Step 4: Wi-Fi (Wireless Network) Configuration	12
Step 6: Wi-Fi WEP Encryption Configuration.....	12
Visonic PowerLink Configuration.....	14
Step 1: Logging-in to the Visonic PowerLink.....	14
Step 2: Connection Setup.....	15
Step 3: Home Devices Customization	15
Step 4: Adding Cameras	16
Step 5: Adding Users	17
Chapter 3: Logging Into The Visonic PowerLink	18
Visonic PowerLink Window	20
Quick View	21
Home Devices Pane	22
Cameras Pane.....	23
Security System Pane	24
Chapter 4: Managing Alerts and Alarms	25

System Alerts.....	25
System Alarms.....	26
Viewing Cameras during an Alarm.....	26
Closing the Alarm Mode Screen.....	27
Chapter 5: Managing Home Devices.....	29
Viewing Device Information.....	29
Filter by Device Status.....	30
Filter by Device Type.....	31
Filter by Location.....	32
Editing Device Setup.....	32
Searching for a Specific Device by Name.....	33
Chapter 6: Managing Video Cameras.....	34
Editing Camera Configuration.....	36
Adding / Removing Cameras.....	36
Setting Arming Modes for Pre-Alarm Recording.....	37
Chapter 7: Managing the Security System.....	38
Arming the PowerMax+ Security System.....	38
Security Information.....	39
Detectors.....	39
Failed Accessories.....	39
Chapter 8: Managing Users.....	40
Adding / Removing Users.....	41
Editing User Profiles.....	42
Chapter 9: Managing System Configuration.....	43
System Configuration.....	43
Editing System Configuration.....	43
Customer Details.....	43
Central Station.....	44
Connection Setup.....	44
Resetting to Factory Settings.....	45
Viewing the PowerMax+ Log.....	46
Glossary.....	47
Alarm.....	47
Alert.....	47
Arming.....	48
Central Station.....	48

Control Panel	48
LATCHKEY	48
Port Forwarding	49
Home Router.....	49
Wi-Fi (Wireless LAN).....	49

Chapter 1: Getting Started

Introduction

The Visonic PowerLink enables you to view and control the Visonic PowerMax+ Security System over the Internet.

It provides the following advanced features:

- Event notifications to Email and mobile phones.
- Display of the status of the PowerMax+ Security system including system mode, detector status and troubled accessories.
- Display of the current status of the home automation devices controlled by the PowerMax+ Security system.
- In-House video viewing via Wired or Wireless cameras around the house.
- Recorded alarm time video of all cameras from the latest alarm.
- Local storage of video camera images on your computer.
- Remote arming and disarming of the PowerMax+ Security system.

All control and view options are enabled via a secured Web Interface, accessible from anywhere around the globe.

The Visonic PowerLink has a built-in Secured Web Server, which ensures that all private information is fully secured. The web interface does not require any software to be downloaded into the remote computer, allowing users to operate the browser at maximum-security level.

Installation

Package Contents

1 x Visonic PowerLink



1 x PowerMax+ PowerLink RS-232 Interface Module



1 x 2m (6.5 feet) Cat-5 Cable



1 x RS-232 Cable



1 x Mounting Kit



1 x Quick Install Guide

1 x Installation Form

1 x Resources CD

System Requirements

- PowerMax+ Security System.
- High-Speed Internet connection (Cable or DSL) enabled via a Home Router (Ethernet Based).
- Microsoft[®] Internet Explorer 6.0 and up on the client computer.
- PC running Windows[®] 2000 or Windows[®] XP, connected to the home router.
- Optional: Wi-Fi 802.11b or 802.11g Access Point

Installation Procedure

The Visonic PowerLink installation procedure involves three stages:

- Hardware Installation
- Router Configuration
- Visonic PowerLink Configuration

A user-friendly On-line Guide guides you through the installation procedure (see Chapter 2: Installing the Visonic PowerLink on page 8 for a detailed description of the installation procedure).

Chapter 2: Installing the Visonic PowerLink

The Visonic PowerLink includes an easy-to-follow On-line Installation Guide with a complete set of installation instructions that can be found on the supplied CD. Using the On-Line Installation Guide is highly recommended. This User Manual includes only general instructions for professional installers.

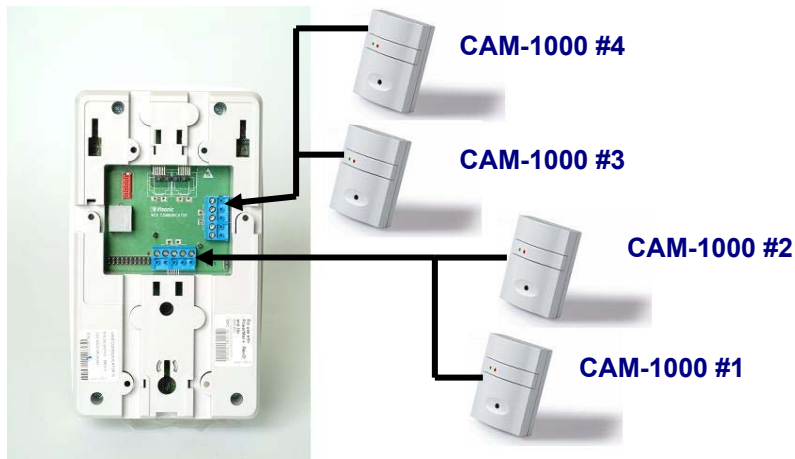
The Visonic PowerLink installation procedure involves the following stages:

- Hardware Installation
- Router Configuration
- Visonic PowerLink Configuration

Hardware Installation

Step 1: Connecting the CAM1000 Cameras to the Visonic PowerLink

1. Cut the wire to the needed length according to the distance between the location of the camera and the location of the Visonic PowerLink.
2. Use the wiring diagram supplied with the CAM1000 cameras to connect the wired cameras to the Visonic PowerLink (for a detailed description refer to the Installation manual of the CAM-1000 camera).
3. Connect the first camera to the connection port labeled 1, the second camera to the connection port labeled 2 and so on.



Step 2: Connecting the Visonic PowerLink to the Home Router

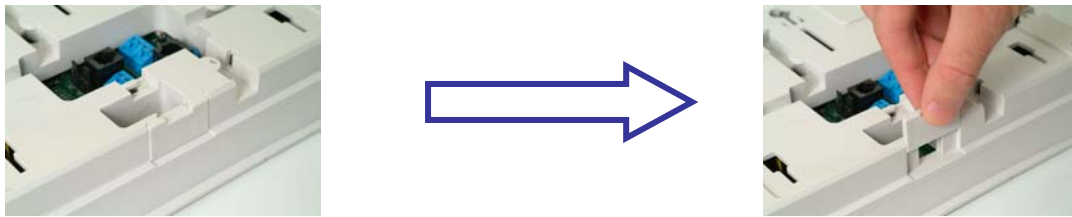
Use the supplied Cat-5 cable to attach the Visonic PowerLink's LAN port to one of the free LAN ports of the Home Router.



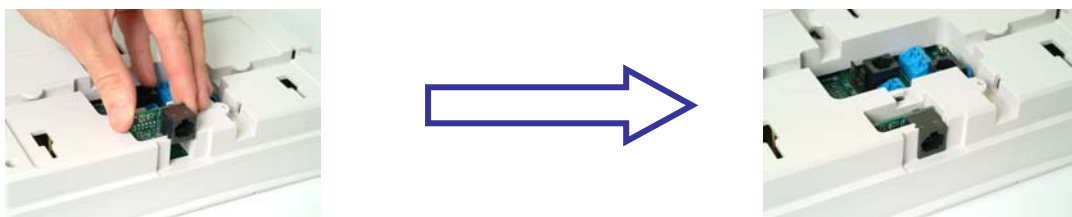
If an Ethernet infrastructure exists in your house, you can connect the Visonic PowerLink to the Home Router through a network wall outlet. Use the supplied Cat-5 cable to connect the LAN port of the Visonic PowerLink to the Network wall outlet.

Step 3: Connecting the Visonic PowerLink to the PowerMax+

1. Remove the plastic cap of the PowerMax+ Control Panel.



2. Connect the Visonic PowerLink Module to the PowerMax+ Control Panel (see figure).



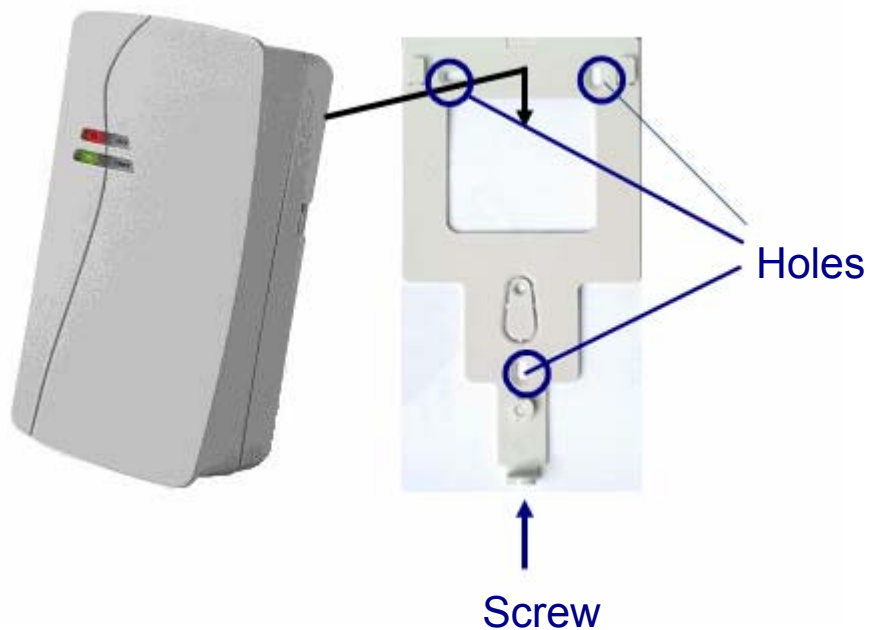
3. Connect the Visonic PowerLink to the PowerLink Module using the supplied RS-232 cable.

**Note**

Make sure the distance between the Visonic PowerLink and the PowerMax+ Control Panel does not exceed the length of the cable.

**Step 4: Wall Mounting the Visonic PowerLink**

1. Mark and drill 3 holes in the mounting surface.
2. Unscrew the screw connecting the bracket to the Visonic PowerLink.
3. Fasten the bracket to the mounting surface using the screws supplied in the mounting kit.
4. Place the Visonic PowerLink in the bracket and push the Visonic PowerLink downwards until you hear a click.
5. Fasten the bracket to the Visonic PowerLink using the supplied screw (see Mounting Kit).

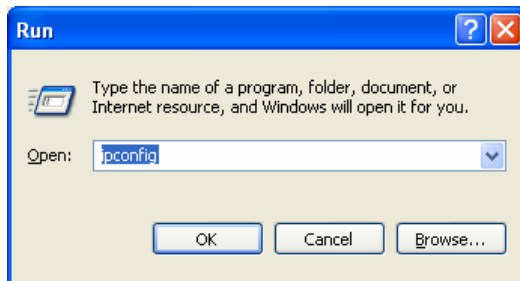


Router Configuration

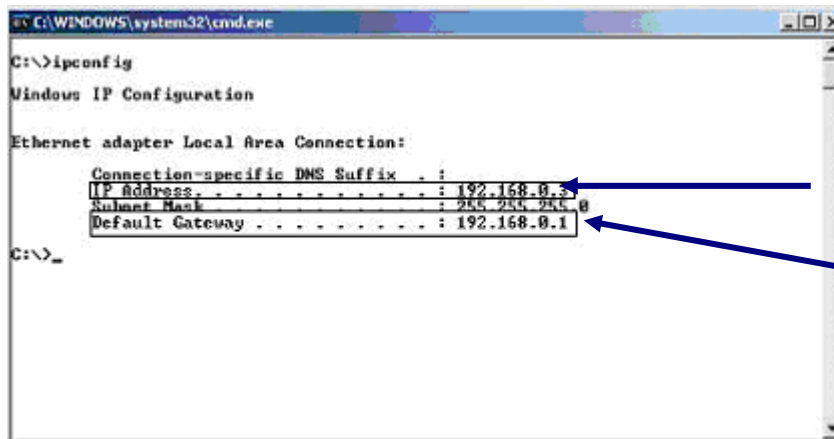
After installing the hardware you need to configure the Home Router. Different Home Router models have different login interfaces and configuration. The following section includes a general description of the procedure and an example of a specific Home Router model. The On-line guide includes specific instructions for the different models.

Step 1: Determining the IP Addresses of Home Router and Visonic PowerLink

1. Make sure you have in front of you the Visonic PowerLink Installation Form supplied with the Visonic PowerLink.
2. On your PC click **Start > Run**.
3. In the **Open** text box type `ipconfig` and click **OK**.



The Windows configuration window appears.



IP Address

Default Gateway

4. Copy the Default Gateway IP Address as the Home Router IP Address Value in the Visonic PowerLink Installation Form.
5. Copy the first three blocks of the IP Address to the Visonic PowerLink IP Address Value in the Visonic PowerLink Installation Form (the last block of the IP Address is 200).

Example: The **Default Gateway** value is 192.168.0.1:

The Home Router IP Address is 192.168.0.1.

The **IP Address** value is 192.168.0.3:

The Visonic PowerLink IP Address is 192.168.0.200.

Step 2: Logging In to the Router

You are required to login to your Router configuration interface.

1. Open your Internet Browser and in the Address line type `HTTP://<Home Router IP Address>`. Replace `<Home Router IP Address>` with the value of "Home Router IP Address" from the Installation form.
2. Once the Login page appears, type a username and a password to login.

Different Routers have different login interfaces. Refer to your Router's manual for instructions.

If you are unable to login, call your home router installer or Internet service provider for assistance.

Step 3: Port Forwarding Configuration

1. In your Router's window, locate the **Port Forwarding** configuration screen.
2. Set the Port Forwarding IP Address to the value of **Visonic PowerLink IP Address** from the Installation Form.
3. Set Protocol to TCP.
4. Set all port related fields to **443**
5. If requested, set the Port Forwarding rule name to **PowerLink**.
6. Save the information.
7. If requested, restart the router and wait for the router to restart

Step 4: Wi-Fi (Wireless Network) Configuration

Perform this step if you intend to connect wireless cameras to the Visonic PowerLink.

1. In your Router Configuration window, locate the **Wireless Network** configuration screen.
2. Set a value for the SSID. Changing the default SSID value is recommended to ensure a secured wireless network.
3. In the Visonic PowerLink Installation Form, write down the value of SSID for future reference.
4. Select a Channel. (You can pick any channel. The default channel is usually 6).
5. Mark the selected channel in the Visonic PowerLink Installation Form.

Step 6: Wi-Fi WEP Encryption Configuration

WEP is the standard encryption of the Wi-Fi network. Enabling WEP is highly recommended and ensures that any information transferred on the Wi-Fi network such as camera images is secured against unauthorized viewers.

Perform this step if you intend to connect wireless cameras to the Visonic PowerLink and you want to enable WEP encryption on your Wireless network.

1. In your Router's window, locate the **Wireless Security** configuration screen.

2. Set Security to **WEP**
3. Set WEP Key length to **128Bits**
4. Type an Encryption Key. A suggested WEP key string can be found on the label on the box of the Visonic PowerLink (see image).



5. In the Visonic PowerLink Installation Form mark down the WEP Key Bits (128bit) and write the WEP Key String
6. If restart is required, select Restart to restart the Router.

Visonic PowerLink Configuration

Step 1: Logging-in to the Visonic PowerLink

1. Before logging-in, the PowerLink has to be enrolled to the PowerMax+. In order to enroll the PowerLink:
 - On the PowerMax+, enter the "USER SETTING" menu.
 - Choose "DEFINE PWRLNK" -> "Install".
 - Press "Show/OK". Wait for the confirmation sound.
 - Press "Away". Press "Show/OK".
2. Open your Internet Browser and in the Address line type HTTP://< Visonic PowerLink IP Address>. Replace <Visonic PowerLink IP Address> with the value of "PowerLink IP Address" from the Installation form.



3. In Visonic PowerLink's Login screen: enter the Username and Password.
Default Username and Password values (if not changed by owner or installer):
Username: Admin
Password: Admin123

**Note**

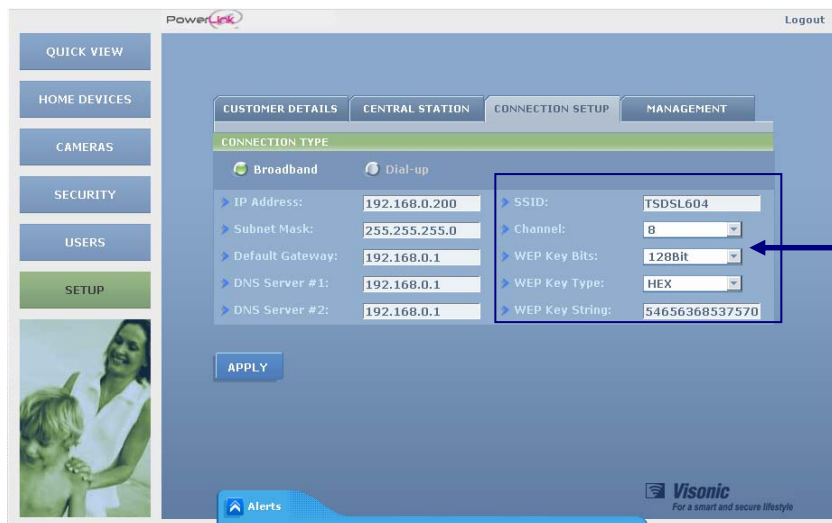
Username and Password are case-sensitive.

4. Click **Login**.

If you are unable to login, call your Visonic PowerLink service provider for assistance.

Step 2: Connection Setup

1. In the left frame of the Visonic PowerLink window click **SETUP**.
2. Click the **CONNECTION SETUP** tab.
3. Copy the **SSID** from the Visonic PowerLink Installation Form.
4. From the **Channel** drop-down list select the Channel number you noted in the Visonic PowerLink Installation Form.
5. From the **WEP Key Bits** drop-down list select **128Bit**.
6. In the **WEP Key String** field type the WEP Key String according to the Visonic PowerLink Installation Form.



Connection Setup Parameters


7. Click **Apply**.

Step 3: Home Devices Customization

You need to select a type and define a name for each Home Automation device enrolled in your PowerMax+ Control Panel.

We recommended that you define the name of a device so it helps identifying it.

Skip this step if you do not have any Home Automation devices enrolled into the system.

1. In the left frame of the Visonic PowerLink window click **HOME DEVICES**.
2. Click **EDIT DEVICES**.
3. In the **EDIT EXISTING DEVICES** screen you can:
 - Type a new name in the **DEVICE NAME** field.
 - or -
 - Click the arrow  next to the **TYPE** field and in the window click a device type.
4. Click **Apply to save your changes**.

Step 4: Adding Cameras

If you have cameras connected to the Visonic PowerLink you need to configure the cameras. This enables viewing the image on a remote computer


1. In the left frame of the Visonic PowerLink window click **CAMERAS**.



2. Click **EDIT CAMERAS**.

➤ **To add a CAM1000 camera to the Visonic PowerLink:**

1. Locate the **ADD CAMERA** area. In the **CAMERA ID** list click and select CAM1000.
2. In the Location list click and select a location from the list.
3. In order to record pre-alarm images, the camera continuously records images during the selected arming modes. Select the arming modes of the security system in which you want the camera to record pre-alarm images.

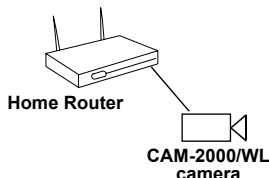
4. Click . Wait for the countdown to end.

➤ **To add a CAM2000 or CAM2000 WL camera to the Visonic PowerLink:**




Note
CAM 2000 and CAM2000WL cameras, when added, must be connected to the Router one by one.

1. Connect the CAM2000/WL camera to the Home Router (or to an Ethernet wall outlet) using the supplied Cat-5 cable **and to the mains**.



2. Wait for the camera to connect to the network (the orange light stops blinking)
3. Locate the **ADD CAMERA** area. In the **CAMERA ID** list click and select CAM2000.
4. In the Location list click and select a location from the list.

5. In order to record pre-alarm images, the camera continuously records images during the selected arming modes. Select the arming modes of the security system in which you want the camera to record Pre-Alarm images.
6. Click . Wait for the countdown to end.

Step 5: Adding Users

The Visonic PowerLink is pre-configured with a Master user called **Admin**. Only the Master user can access the **EDIT** and **SETUP** screens of the Visonic PowerLink's interface. We recommend you first change the username and password of the Master user and save the username and password in a safe place.

1. In the left frame of the Visonic PowerLink window click **USERS**.

➤ ***To change the Master user's name and password:***

1. Click the **EDIT** button under the PROFILE title.
2. Change the username from **Admin** to your own user name.
3. Change the password to your own password.
4. Repeat this step in the **Confirm Password** area.
5. Click **OK**.

➤ ***To add a user to the Visonic PowerLink:***

1. Click **ADD USER** and set the following parameters:

Username - The user name used for logging in to the web interface.

Password – Login password. (You need to re-enter the password to confirm).

Mobile - The mobile phone number to which notifications are sent.

Email - The email address to which notifications are sent.

PM+ User# - Attach the user name to the user number. Latchkey notifications (User entered the house) sent from the Visonic PowerLink (which by default include a PowerLink user number) now include the user name attached to this number.

2. Click **OK**. The user is added to the **ADDITIONAL USERS** list.

Chapter 3: Logging Into The Visonic PowerLink

You log in to the Visonic PowerLink through the Internet Browser.

After you log in the Quick View window is displayed with an overall view of the security system. Loading time of the Quick View screen may vary due to the heavy amount of data presented. First time loading is expected to take longer than future loading times.

➤ *To login to your Visonic PowerLink*

1. Open your Internet Browser.
2. In the **Address** line, type the address given to you by the installer.



If you have installed the Visonic PowerLink yourself, use the following addresses:

From within the house:

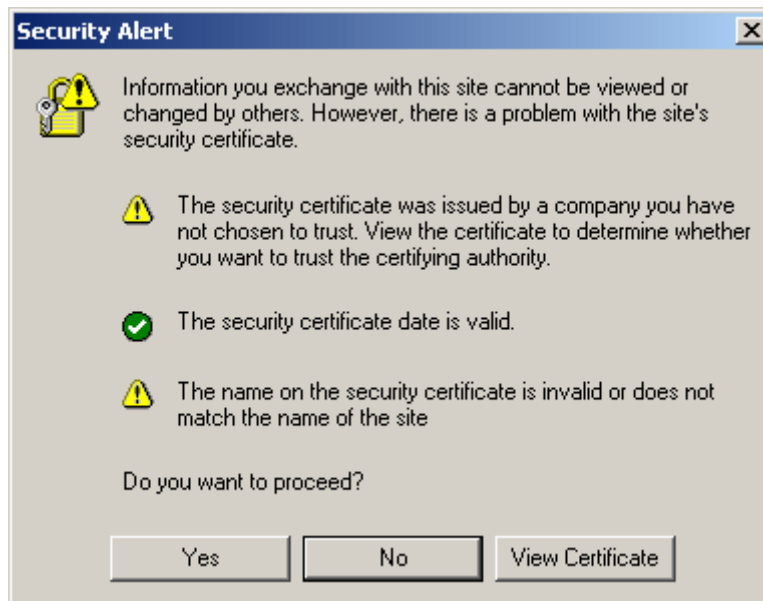
http://<PowerLink IP Address>. Replace **<PowerLink IP Address>** with the PowerLink IP Address value from your installation form.

From a remote computer:

http://myhome.visonic.com/<PowerLink ID> Replace **<PowerLink ID>** with the PowerLink ID value from your installation form. By default, your **PowerLink ID** is equivalent to your PowerLink **Serial Number (displayed in the SETUP menu)**.



3. In the Security Alert message window, click **Yes**:



4. Wait for the **Login** page to load.



5. In Visonic PowerLink's Login screen type the Username and Password.
Default Username and Password values (if not changed by owner or installer):
Username: **Admin**
Password: **Admin123**
Note that Username and Password are case-sensitive.
6. Click **Login**.
If you are unable to login, call your Visonic PowerLink service provider or Installer for assistance.
Once you have logged in, the Quick View screen appears.

Visonic PowerLink Window

The Visonic PowerLink window displays the different views that enable managing the PowerMax+ Security System, Home automation devices and Cameras via the Internet:

Quick View: Displays an overall view of the system status including video camera images.

Home Devices View: Enables quick and efficient management of the home devices controlled by the PowerMax+ Security System.

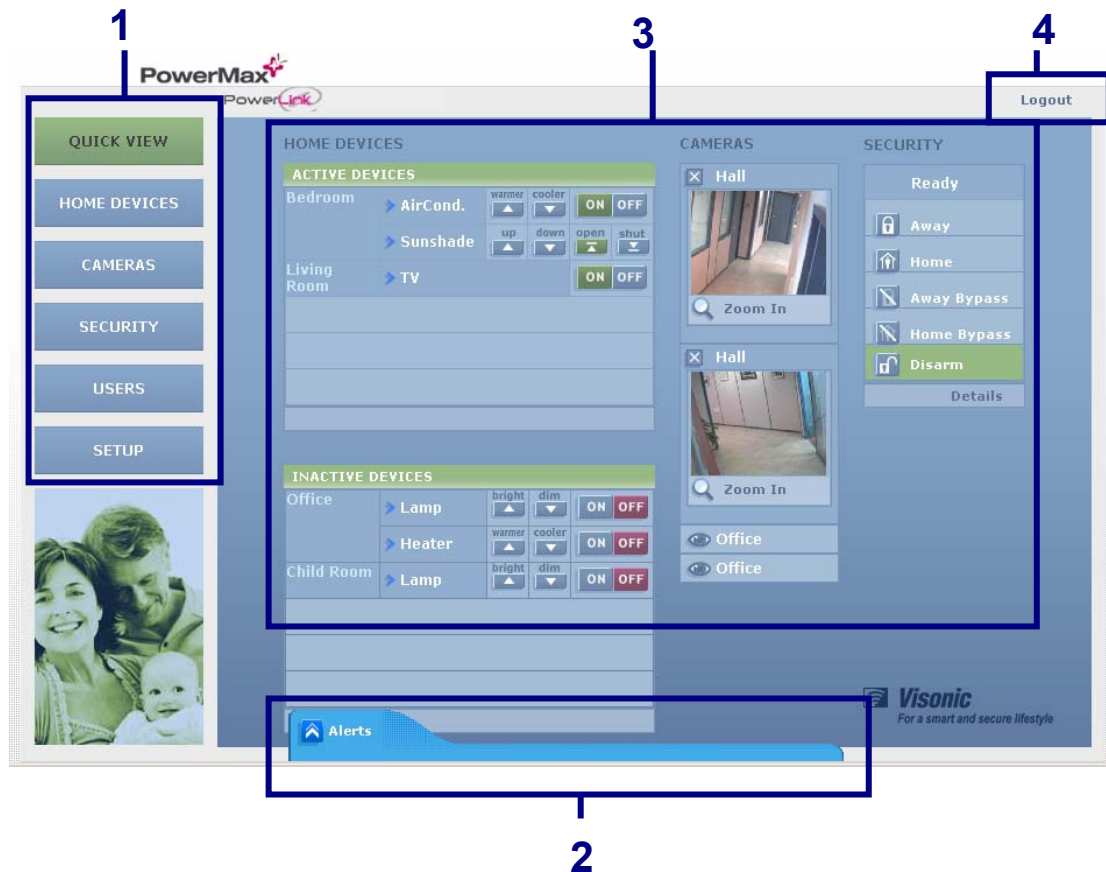
Cameras View: Used to view images from the connected cameras and manage cameras.

Security View: Gives a detailed overview of the security system including the current mode and status of the security system, detectors and accessories.



Users View: Used to manage system users.

Setup View: Used for system configuration and viewing the PowerMax+ log.

In all views the Visonic PowerLink window includes the following components:



1 –Side Menu: Click to display the different Views.

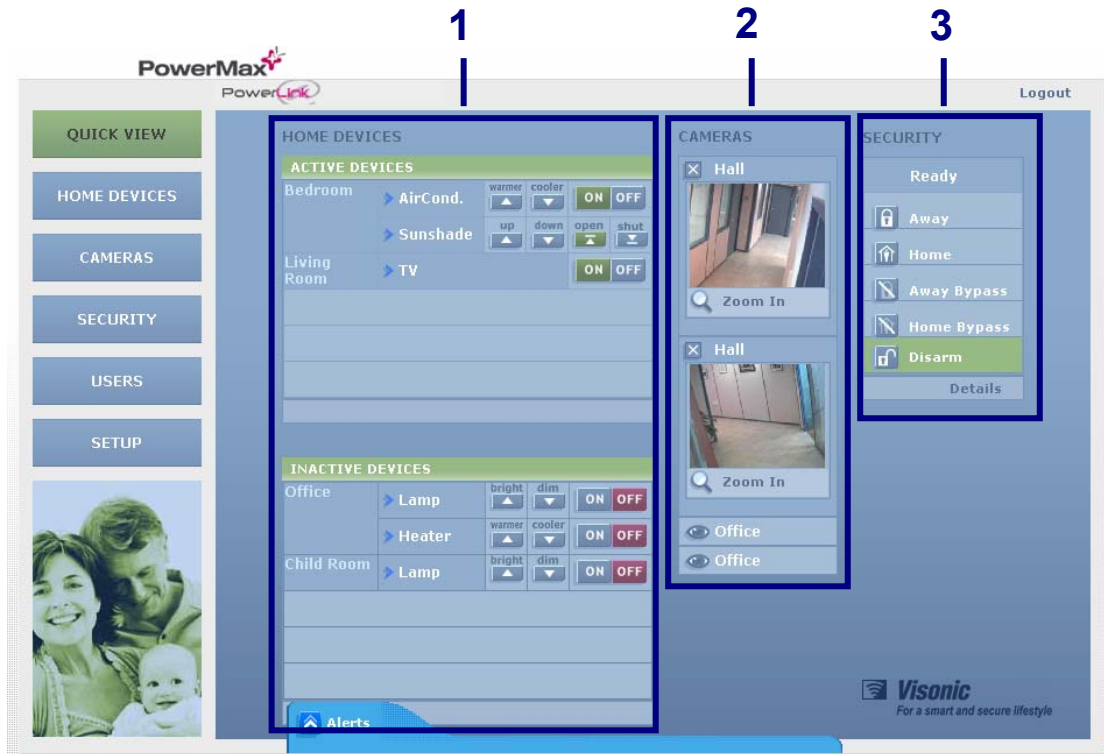
2 – Alerts Indicator: (appears only if alerts exist in the system). Use the  /  arrows to display or minimize system alerts.

3 – Work Area: Use to display video, system information and configuration data.

4 – Logout: Click to logout.

Quick View

When you log into the Visonic PowerLink, the application opens in Quick View. The Quick View screen displays an overall view of the current status of the house subsystems controlled by the PowerMax+ Security System in three Information panes:



1 – Home Devices Pane

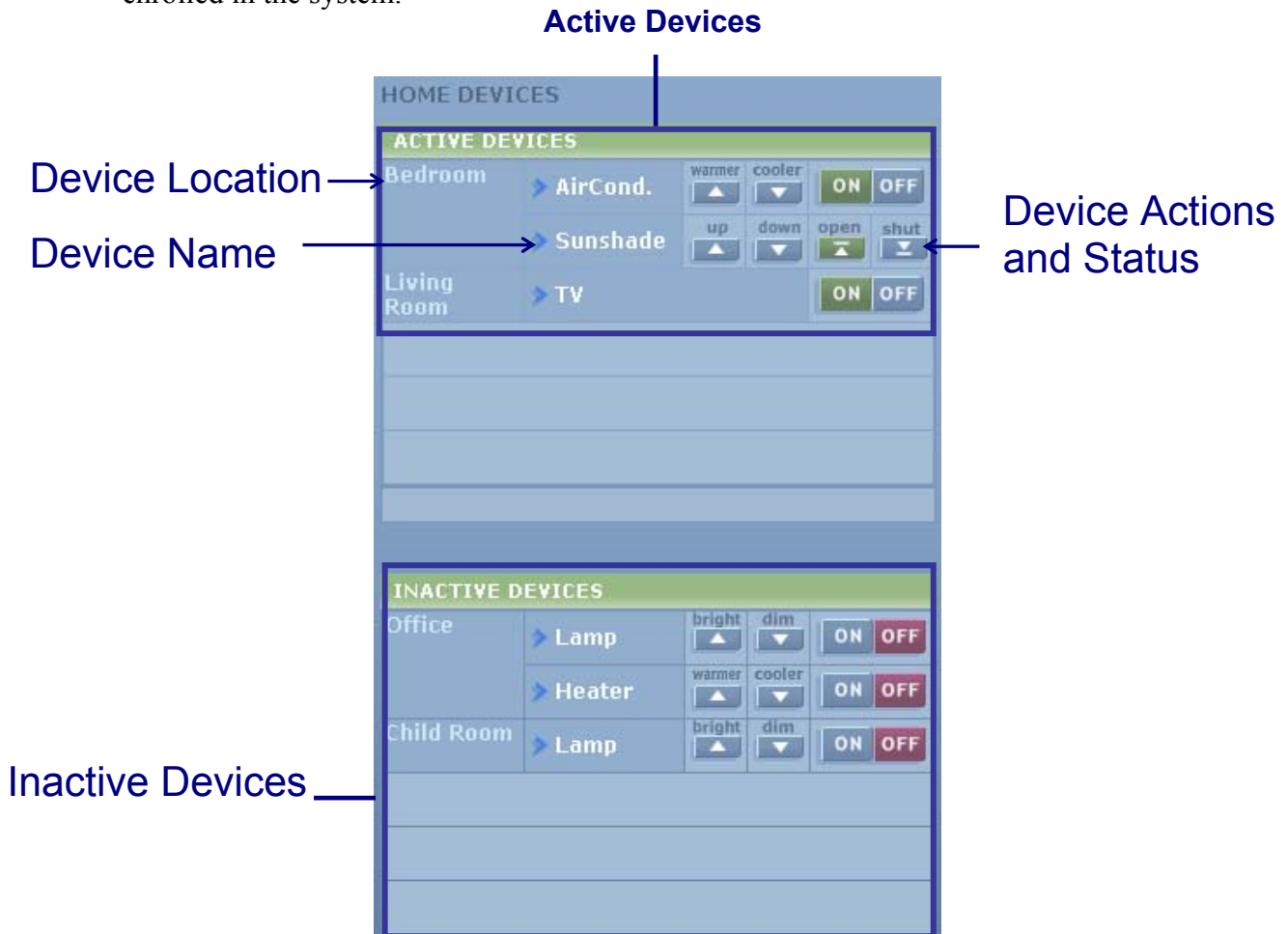
2 – Cameras Pane

3 – Security Pane

In the following sections each Information pane of the Quick View screen is described in detail.

Home Devices Pane

This pane displays the status and actions of the different home automation devices enrolled in the system.



The **Active Devices** list includes information for all the home automation devices currently turned ON:

- Device name or description – can be defined in the Edit Devices screen accessed from the Home Devices view.
- Device location, as defined in the PowerMax+ Security Control Panel.
- Available actions for a home automation device. These vary according to the device type. For example: a lamp can be dimmed and brightened. A heater can be set to a warmer or cooler temperature. The text on and above the action buttons describes the functionality for the specific device.

To deactivate an active device: Click the **OFF** icon of the required device.

The **Inactive Devices** list includes information for all the home automation devices currently turned OFF. Most recently used devices appear at the top of the list while least accessed devices appear at the bottom.

Use the **More** and **Previous** buttons at the bottom of the pane to scroll in the Active Devices and Inactive Devices lists.

To activate an inactive device: Click the **ON** icon of the required device.

Cameras Pane

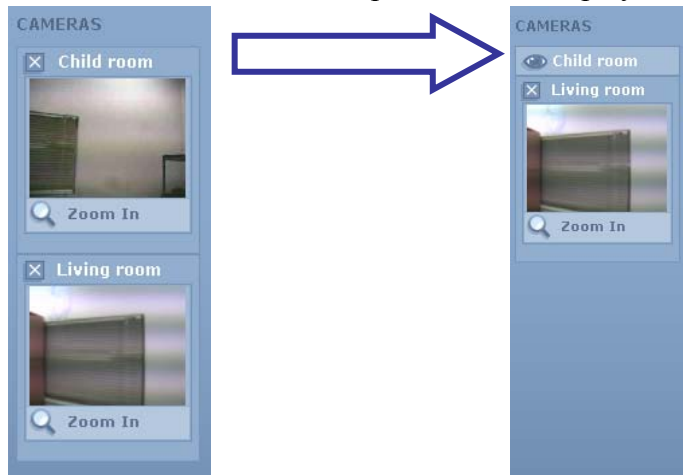
The Cameras pane displays video from the video cameras enrolled in the system.

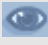


Note
Camera location can be defined in the **Edit Cameras** screen (see Managing Cameras on page 34).

➤ **To collapse a camera display:**

1. Click the **Close** icon  to collapse a camera display.



Note
Click  to re-display the camera images.



➤ **To enlarge a camera display:**

1. Click the **Zoom-In** icon  to zoom into a display.

The Zoom-In window appears. The date and time of the current image are displayed below the image.



2. You can now do any of the following:

- Click the **Save Image** icon  to open the **Save Picture** window and save the image as a graphic file.
- Click **ON / OFF** to turn the camera view on or off.
- Click the **Close** icon  to close the zoomed in display.

Security System Pane

This pane displays the system status as seen on the LCD screen of the PowerMax+ Security System and enables changing the arming mode.



➤ **To set an arming mode:**

1. Click the required arming mode in order to set the Security System to the selected mode.

Current mode is colored Green.

Click on **Details** at the bottom of the pane to switch to the Security View with additional information about the Security System (see Managing the Security System on page 38).

Chapter 4: Managing Alerts and Alarms

The PowerMax+ Security System distinguishes between two major event types: Alarms and Alerts. Alarms are events that indicate that the security system is alarmed due to a burglar intrusion, a panic situation, an emergency situation or any other situation that is declared as an alarm situation.

All trouble events or events that do not put the security system into Alarm mode, are considered Alerts and should be treated as soon as possible. Alerts do not usually affect the security system immediate behavior.

All Alert and Alarm details are written to the PowerMax+ log (see Viewing the PowerMax+ Log on page 46).

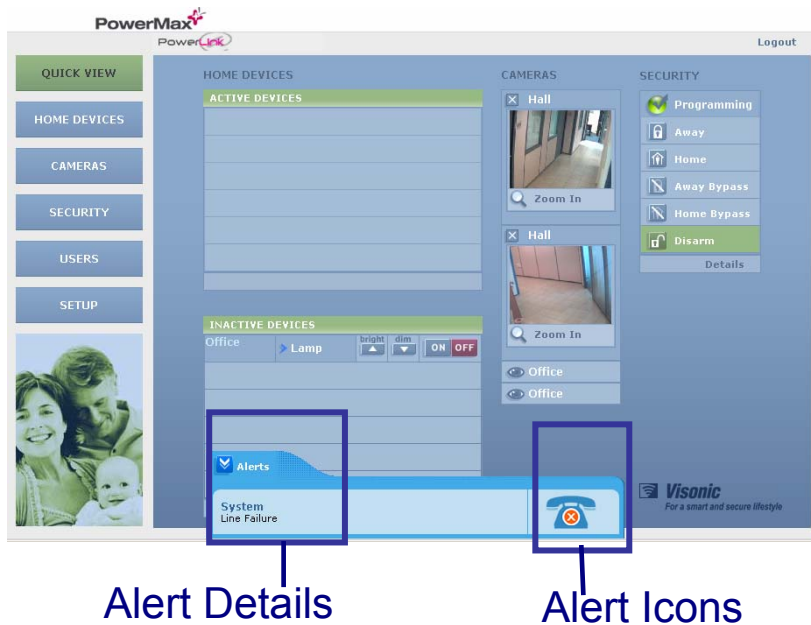
System Alerts

If an Alert situation exists in the system, the Alerts Indicator appears in any Visonic PowerLink screen. The Alerts Indicator displays alert details and an icon indicating the alert type.



You can choose to display or minimize the alert details.

The Visonic PowerLink window displays Alert indications as long as alerts exist in the security system.

Once an alert is treated the Alert details are removed from the Alert Indicator automatically. If there aren't any alerts in the system, the Alert Indicator disappears completely.



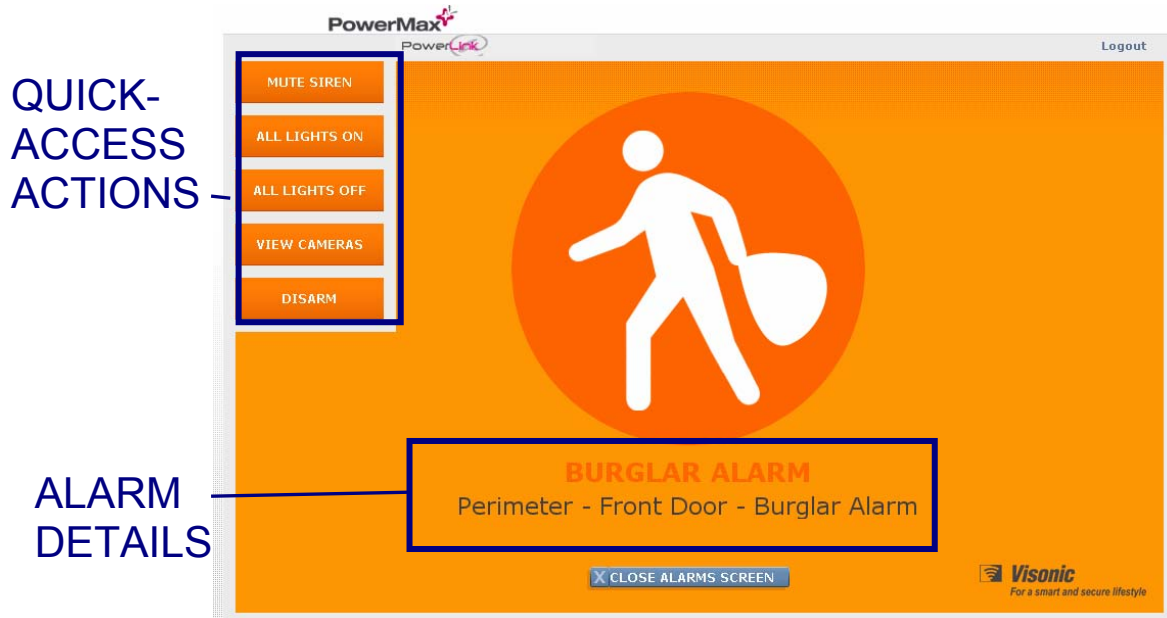
➤ To Minimize / Display Alerts Details:

1. To Minimize alert details click the Minimize icon .
2. To display alert details click the Display icon .

System Alarms

The Visonic PowerLink treats Alarm situations in a special way. In an Alarm situation, the whole window changes into the Alarm mode screen.

The Alarm mode screen displays the alarm type, date and time. It includes quick-access buttons to alarm time actions.



The Quick-access buttons enable you to do the following:

- Mute the security system siren.
- Turn all lights off or on.
- View video cameras.
- Disarm the Security system.

Viewing Cameras during an Alarm

During an alarm you can view video recorded by the cameras from the pre-alarm time (if pre-alarm time is configured) onward.

You can also choose to view live video from the cameras.

➤ *To view video cameras:*


1. In the Alarm mode screen click the Video Cameras icon

VIEW CAMERAS

The Work area displays the Cameras View in Alarm mode. All cameras titles indicate **Alarm View** - recorded video from the alarm period.





2. You can now do any of the following:

- Click  to display currently viewed video.



Note

You can then click  to return to recorded video.

- Click  to open the **Save As** window and save the image as a graphic file on your computer.
- Click  to enlarge the displayed image.




Note

For a detailed description of Cameras view see Managing Video Cameras on page 34.

Closing the Alarm Mode Screen

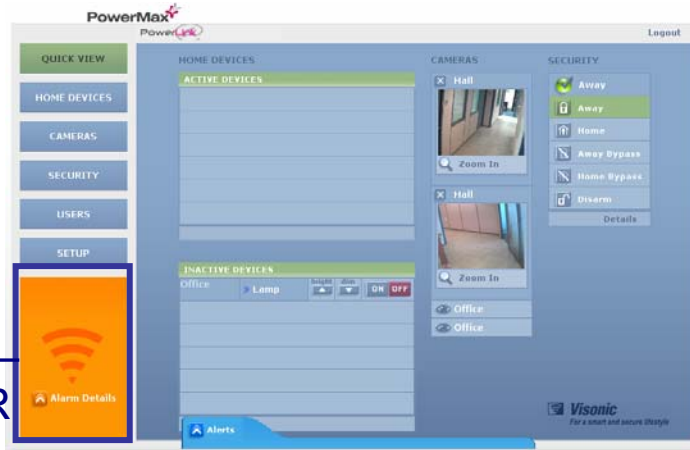
You can close the Alarm mode screen. Once the alarm mode screen is closed, an alarm indication is displayed on all Visonic PowerLink screens. You can click the Alarm indicator at any time to return to the Alarm mode screen. The alarm indication disappears only when the alarm is cleared from the security system's memory.

➤ *To close the Alarm mode screen:*

1. Click the Close Alarm Screen icon .

The normal Visonic PowerLink window re-appears with the Alarm indicator.

ALARM —
INDICATOR



Note
Click the Alarm Indicator to re-display the Alarm mode screen.

Chapter 5: Managing Home Devices

The Visonic PowerLink enables PowerMax+ users that have an X10 transmitter module connected to the PowerMax+ control panel and X10 enabled appliances around the house to control these home devices over the Internet. The Visonic PowerLink allows the end-user to manage the different appliances (Turn On, Off), attach descriptions and locations to each appliance, view the current status of the appliance (On, Off) as well as the ability to receive notifications on appliance status changes and troubles.

The Home Devices view enables quick and efficient management of home devices enrolled in the PowerMax+ security system.

Viewing Device Information



The Home Devices View is separated into three tabs in which the home devices are displayed filtered by:

- Device Status
- Device Type
- Location

The tabs display relevant information for each home automation device as well as functionality actions.

Functionality actions for a home automation device vary according to the device type. For example a lamp can be dimmed and brightened, a heater can be set to a warmer or cooler temperature. The text on and above an action buttons describes the functionality for a specific device.

**Note**

To use the functionality click the  and  icons of the action.

A search engine enables a direct search of a specific home device by the device name (see Searching for a Specific Device by Name on page 33).

In the following sections each tab is described in detail.

In each of the filtering tabs you can activate or deactivate the home automation devices.

➤ ***To display the Home Devices View:***

1. In the side menu of the Visonic PowerLink window click



The Home Devices view is displayed.

➤ ***To activate / deactivate a home automation device:***

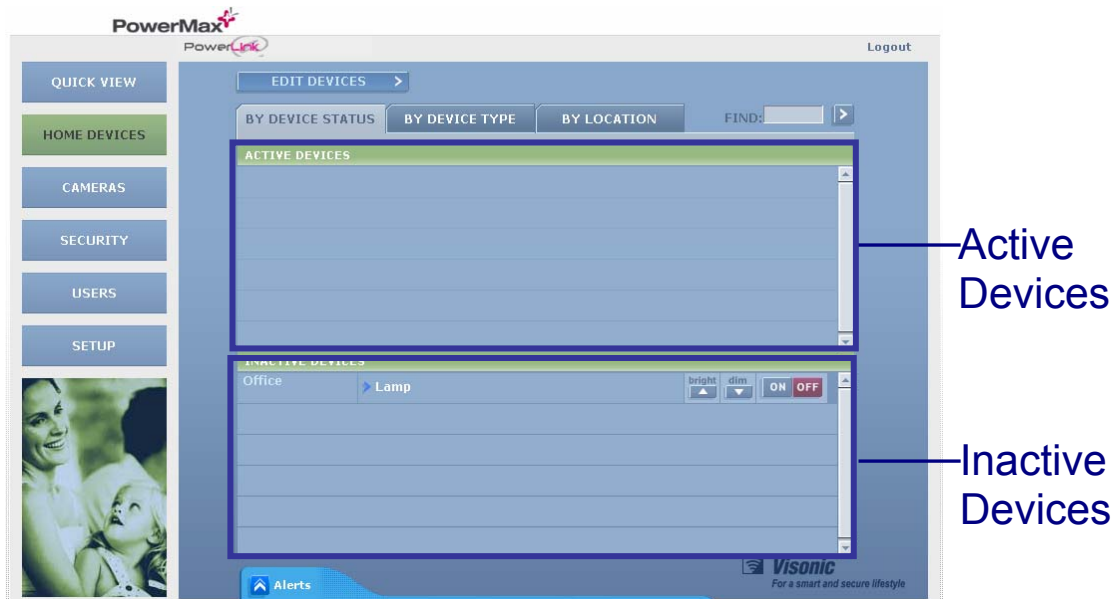
1. Select one of the tabs and locate the required home automation device (see the following sections for a detailed description of each tab).
2. You can now do one of the following:

- **To deactivate an active device:** Click the **OFF** icon of the required device.
- **To activate an inactive device:** Click the **ON** icon of the required device.

Filter by Device Status

The **By Device Status** tab displays two lists:

- **Active Devices List:** Includes all home automation devices currently turned ON. This list appears in the upper part of the Work Area.
- **Inactive Devices List:** Includes all home automation devices currently turned OFF. Most recently used devices appear at the top of the list while least accessed devices appear at the bottom.

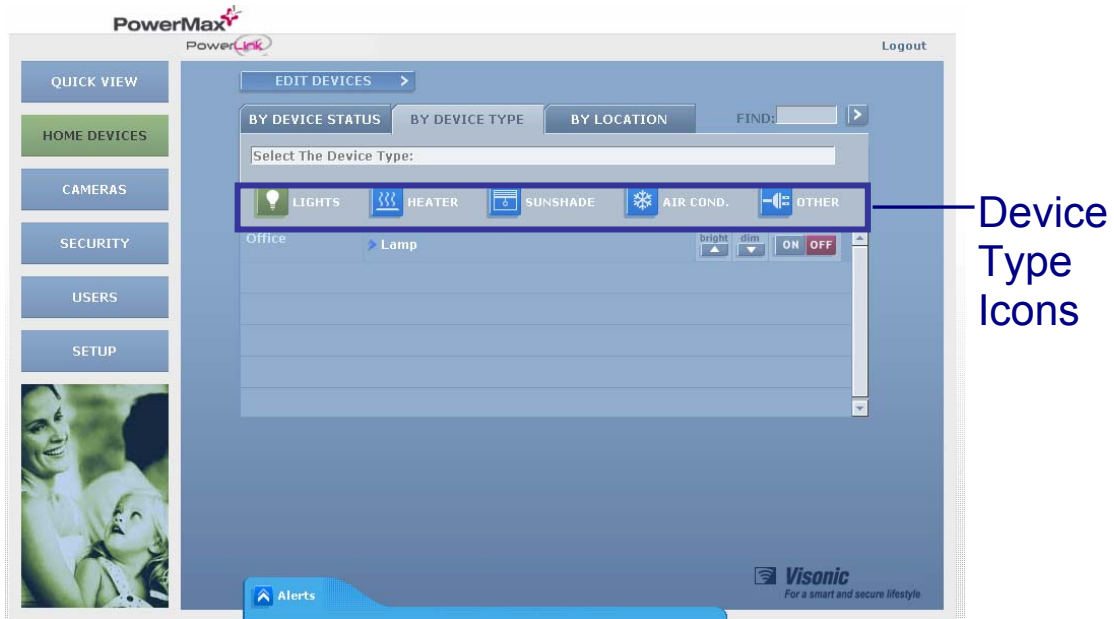


The lists display the following information for each home automation device:

- Device location as defined in the PowerMax+ security control Panel.
- Device name or description as defined by the Master user in the Edit Devices screen.
- Functionality actions according to device type.
- Device status: whether the device is active (ON) or inactive (OFF).

Filter by Device Type

The **By Device Type** tab lists all home automation devices of a selected type.



➤ **To display devices according to device type:**

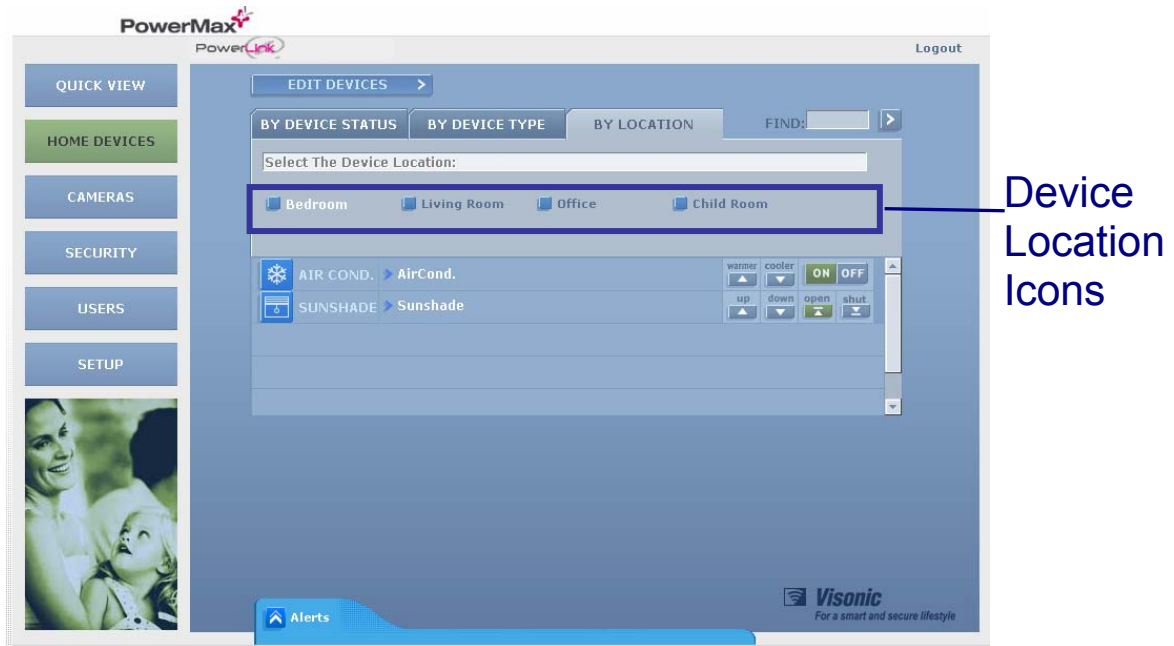
1. Switch to Home Devices view and click the By Device Type tab.
2. Click the Device Type icon of the type you require.

All devices of this type are listed with the following information:

- Device location
- Device name or description.
- Functionality actions according to device type.
- Device status: ON / OFF.

Filter by Location

The **By Location** tab lists all home automation devices by their location as defined in the PowerMax+ security control Panel.



➤ **To filter devices according to device type:**

1. Switch to Home Devices view and click the By Location tab.
2. Click the device location icon of the location you require.

All devices of this location are listed with the following information:

- Device type icon
- Device name or description.
- Functionality actions according to device type.
- Device status: ON / OFF.

Editing Device Setup



You can change a device name and type of an existing home automation device enrolled in the system.



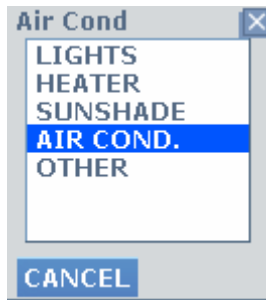
Important

Make sure you configure the device type correctly as the Visonic PowerLink adjusts the home automation control according to the device type.

➤ **To edit the name or type of a device:**

1. In the side menu of the Visonic PowerLink window click .
2. Click .
3. In the **EDIT EXISTING DEVICES** screen you can:
 - Type a new name in the **DEVICE NAME** field.

- Click the arrow  next to the **TYPE** field and in the window that appears click a new device type.



4. Click **Apply**.

Searching for a Specific Device by Name

A search engine enables a direct search of a specific home device by the device name.


➤ **To search for a specific device in the Devices View screen:**

1. Select the tab by which you want search results to be filtered for display.

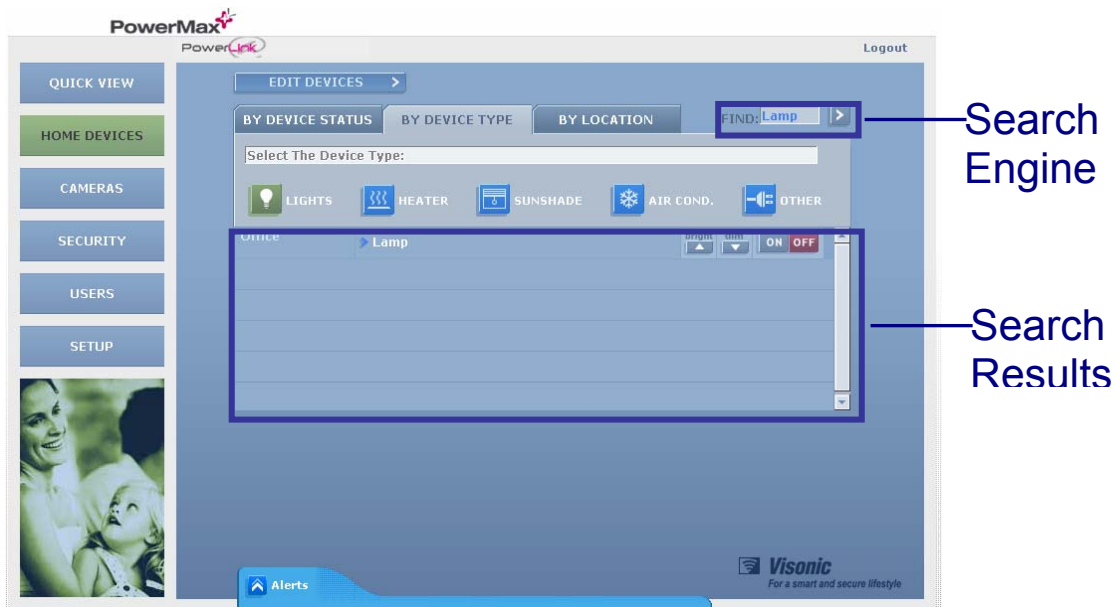


Note

If the Search option is used from the **By Device Type** or **By Location** tabs, make sure to choose the location or type of the device that you are looking for prior to the search.

2. Type a device name or partial name in the **Find** text box and click the  button.

Matching results appear in the selected tab.



Tip

You can now click the other tabs and locate the device according to other filtering options.

Chapter 6: Managing Video Cameras

The Visonic PowerLink supports up to four cameras. Cameras can be Wired (RS-485, Ethernet) or Wireless (Wi-Fi). Users who purchase the Visonic PowerLink along with cameras can view the camera images on-line over the Internet.

For each connected camera, the Visonic PowerLink can store 5 frames of pre-alarm and 10 frames of post-alarm images. Images are stored at the time of alarm and can be used to verify the alarm by the user or alarm central station. Since pre-alarm requires the camera to record at all times, a situation that might affect's the customer's privacy; the pre-alarm image recording is optional and can be disabled per camera in a specific mode of the home security system. Privacy control is configurable by the user.

The Visonic PowerLink can control a variety of cameras. CAM1000 and CAM2000 are **wired**. CAM2000WL cameras are **wireless** cameras. CAM1000 cameras are connected directly to the Visonic PowerLink while CAM2000 and CAM2000WL cameras are connected to the Visonic PowerLink via the Home Router or Wi-Fi Access Point.



CAM1000



CAM2000

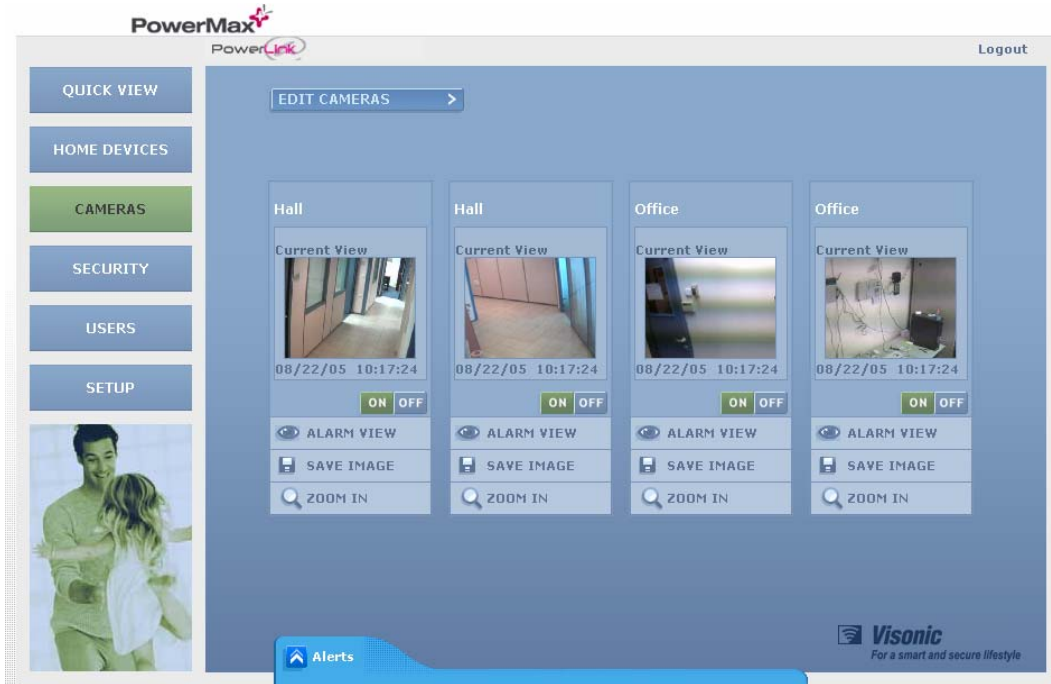


CAM2000WL

The Cameras view is used to view images from the connected cameras and to manage the video cameras enrolled in the system.

You can add and remove cameras as well as configure the alarm pre-recording mode to include recording in any one of the arming modes:

- **ARM AWAY:** Pre alarm images are recorded when the system is in ARM AWAY mode.
- **ARM HOME:** Pre-alarm images are recorded when the system is in ARM HOME mode.
- **DISARM:** Pre-alarm images are recorded when the system is unarmed.



➤ *To display the Cameras View:*

1. In the side menu of the Visonic PowerLink window click

CAMERAS

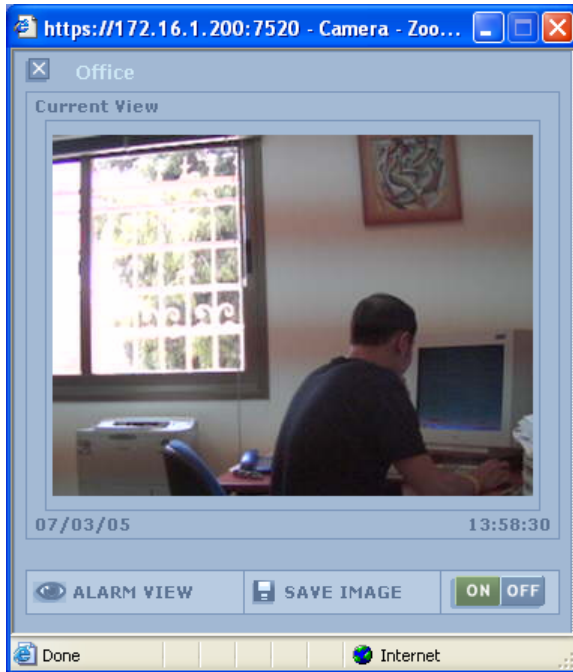
The Cameras view is displayed.

The current view from each of the cameras enrolled in the system is displayed with the current image time and date.

For each camera you can now do any of the following:

- Click the **ON** and **OFF** icons to switch the camera view ON or OFF.
- Click the **ALARM VIEW** icon to switch the camera view to the stored images from the last alarm in the house. The **Alarm View** icon changes to **Current View**. Clicking on the **Current VIEW** icon returns camera the current view of the house.
- Click the **SAVE IMAGE** icon to open the **Save Picture** window and save the image as a graphic file to the local hard drive.
- Click the **Zoom In** icon to enlarge the video display.

The Current View window appears. The date and time of the current image are displayed below the image. You can perform any of the above actions in the enlarged view window.



Click the **Close Window** icon  to close the zoom-in window.

Editing Camera Configuration

You can change the configuration of the cameras enrolled in the system. You can change the location, and the pre-alarm recording mode.

➤ ***To edit the video camera configuration of the system:***

1. In the side menu of the Visonic PowerLink window click .

The Cameras view is displayed.




2. In the Cameras view work area click .

In the **EDIT CAMERAS** area you can edit the existing cameras or add new cameras.




Adding / Removing Cameras

If you have cameras connected to the Visonic PowerLink you need to configure the cameras. This enables you to view the image on a remote computer. You can also remove a camera from the system.

➤ ***To configure a CAM1000 camera in the Visonic PowerLink:***


1. In the **ADD CAMERA** area in the **CAMERA ID** list click  and select CAM1000.
2. In the Location list click  and select a location from the list.
3. Select the arming modes of the security system in which you want the camera to record Pre-Alarm image.
4. Click  and wait for the countdown to end.

The new cameras current view appears in the work area.

- **To configure a CAM2000 or CAM2000WL camera in the Visonic PowerLink:**
1. Connect the CAM2000/WL camera to the Home Router using the supplied Cat-5 cable **and to the mains**.
 2. Wait for the camera to connect to the network (about 30 seconds)
 3. In the **ADD CAMERA** area in the **CAMERA ID** list click  and select CAM2000.
 4. In the Location list click  and select a location from the list.
 5. Select the arming modes of the security system in which you want the camera to record Pre-Alarm images.
 6. Click  and wait for the countdown to end.

The new cameras current view appears in the work area.

➤ **To remove a camera:**

1. In the Edit Cameras area locate the camera you want to remove and click the Remove icon .

The camera is removed from the list.



Important

When removing more than one camera you need to remove the cameras one at a time. Once a camera is removed, disconnect it from mains. Trying to remove more than one camera may cause IP conflicts between the removed cameras.

Setting Arming Modes for Pre-Alarm Recording


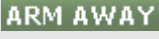
In order to record Pre-Alarm images, the camera continuously records images during the selected arming modes.

For each connected camera, the Visonic PowerLink can store 5 frames of pre-alarm and 10 frames of post-alarm images. Images are stored at the time of alarm. Since pre-alarm requires the camera to record at all times, which might affect customer privacy; the pre-alarm image recording is optional and can be disabled per camera in a specific mode of the home security system. To set arming mode for pre-alarm recording:

1. In the **Edit Cameras** area locate the camera for which you want to set the arming mode for pre-alarm recording.
2. Click the arming modes you want to enable.



Note

Enabled arming modes change from blue to green for example:  changes to .

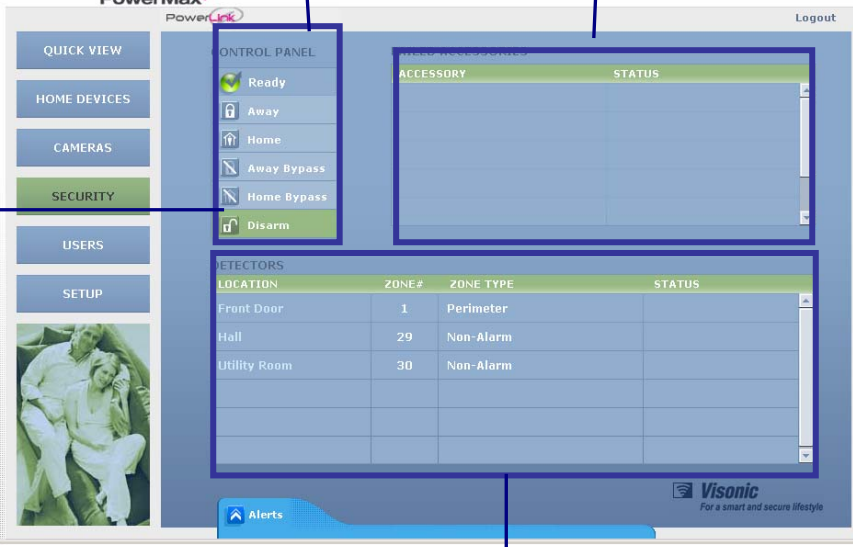
Click again to disable.

3. Click **APPLY** to confirm and return to Cameras view.

Chapter 7: Managing the Security System

The Security view Work Area displays a detailed overview of the security system including the current arming mode of the security system, the status of the security system, the list of detectors and their statuses and a list of other security system accessories with a problem.

It enables you to remotely arm and disarm the security system in different arming modes.



The screenshot shows the Visonic PowerMax+ Security System interface. The interface is divided into several sections:

- System Status:** Located at the top left, it shows the current arming mode. The 'Ready' mode is selected, indicated by a green checkmark icon. Other modes include Away, Home, Away Bypass, Home Bypass, and Disarm.
- Failed Accessories:** Located at the top right, it displays a table with columns for 'ACCESSORY' and 'STATUS'.
- Detectors Enrolled in the System:** Located at the bottom, it displays a table with columns for 'LOCATION', 'ZONE#', 'ZONE TYPE', and 'STATUS'. The table contains the following data:

LOCATION	ZONE#	ZONE TYPE	STATUS
Front Door	1	Perimeter	
Hall	29	Non-Alarm	
Utility Room	30	Non-Alarm	

Annotations in blue text point to these sections: 'System Status' points to the arming mode controls; 'Failed Accessories' points to the accessories table; 'Current Arming Mode' points to the 'Ready' mode button; and 'Detectors Enrolled in the System' points to the detectors table.

Arming the PowerMax+ Security System

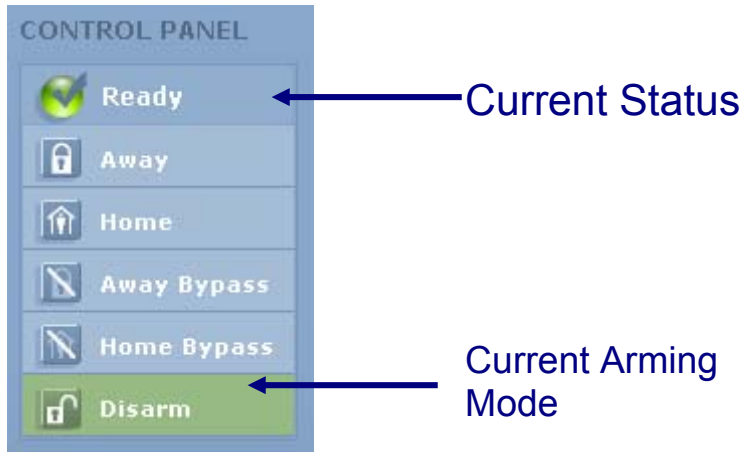
The Visonic PowerLink enables remote arming and disarming of the PowerMax+ Security System.

The Security view displays the current status of the PowerMax+ security system according to the arming mode set.

The following arming modes are available:

- **AWAY:** All zones are protected
- **HOME:** Perimeter zones are protected but interior zones are not.
- **BYPASS AWAY:** AWAY mode with a disturbance ignored in one or more zones.
- **BYPASS HOME:** HOME mode with a disturbance ignored in one or more zones.
- **DISARM:** The system is in standby mode

The Security view displays the current arming mode in green.



➤ ***To change the arming mode:***

1. Click the required arming mode in the list to set the Security System to the new mode.

The new mode is marked Green.

Security Information

Detectors

The Security view displays a list of all the detectors enrolled in the system and their status. For each detector the list displays its Zone Name, Zone Number and Zone Type.

Failed Accessories

The Security view displays information for failed system accessories. For each failed accessory, the accessory name and status is displayed.

Chapter 8: Managing Users

The Visonic PowerLink is pre-configured with a Master user called **Admin**. Only the Master user can access the Users and Setup views of the Visonic PowerLink.



The Master user can add additional users to the Visonic PowerLink. Users that are added appear in the ADDITIONAL USERS list. A Master user can also edit or add information to the Master user or to other users of the Visonic PowerLink.

The Visonic PowerLink enables users to receive home security system, home control & automation and camera related notifications. The notifications can be sent to a mobile phone or an email address. The list of notifications can be customized for each user of the Visonic PowerLink so every user receives only relevant notifications to the desired phone number or email address. Users can also set up the type of notification (SMS or email) per each event.

A user profile includes the following information:

- **Username** - The user name used for logging in to the web interface.
- **Password** – Login password.
- **Mobile** – The mobile phone number to which notifications are sent (optional).
- **Email** – The email address to which notifications are sent.
- **PM+ User#** – Attach the user name to the user number. Latchkey notifications (User entered the house) sent from the Visonic PowerLink (which by default include a PowerLink user number) now include the user name attached to this number.

Managing system users is done in Users View.



Tip

Change the username and password of the Master user and save the username and password in a safe place.

➤ *To display the Users View:*

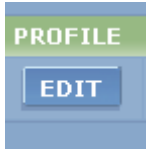
1. In the side menu of the Visonic PowerLink window click



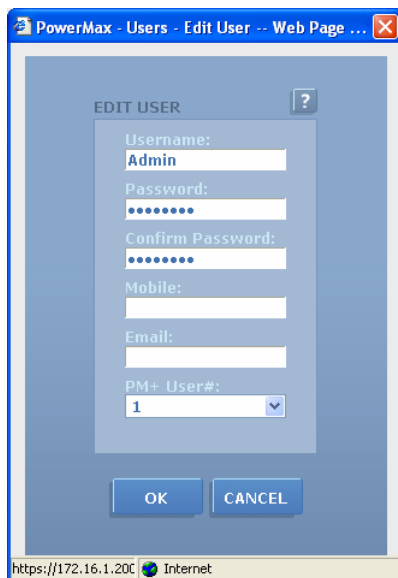
The Users view is displayed.

➤ *To change the Master user's name and password:*

1. In Users view click the **EDIT** button under the **PROFILE** title.



The following window appears.



2. Change the username from Admin to your own user name.
3. Change the password to your own password.
4. Repeat this step in the Confirm Password area.
5. Click **OK**.

Adding / Removing Users

You can add up to seven additional users to the Visonic PowerLink (excluding the Master user). You can then remove any or all of these users. The Master user cannot be removed.

➤ *To add a new user:*

1. Click **ADD USER** and set the following parameters:

Username - The user name used for logging in to the web interface.

Password – Login password. (You need to re-enter the password to confirm).

Mobile - The mobile phone number to which notifications are sent.



Note
The mobile phone number is optional.

Email - The email address to which notifications are sent.

PM+ User# - Attach the user name to the user number. Latchkey notifications (User entered the house) sent from the Visonic PowerLink (which by default include a PowerLink user number) now include the user name attached to this number.

2. Click **OK**.

The user is added to the **ADDITIONAL USERS** list.

➤ **To remove a user:**

1. In the User view locate the user you want to remove and click the Remove icon



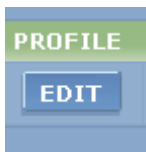
The user is removed from the **ADDITIONAL USERS** list.

Editing User Profiles

If you have the proper authorization you can edit the profile of any user.

➤ **To change the Master user's name and password:**

1. In Users view click the **EDIT** button under the **PROFILE** title.



The following window appears.



2. Edit the user profile according to your needs.
3. Click **OK**.

The user profile is updated in Users view.

Chapter 9: Managing System Configuration

System Configuration

Managing system configuration is done in Setup view.

Setup view includes the following tabs:

- **Customer Details:** Customer related details such as home address and telephone numbers.
- **Central Station:** Central center related parameters.
- **Connection Setup:** Communication parameters that define the way that the Visonic PowerLink is connected to the Router as well as Wi-Fi related parameters.
- **Management:** PowerMax+ log and Factory Reset option.

➤ *To display the Setup View:*

1. In the side menu of the Visonic PowerLink window click



The Setup view is displayed.

Editing System Configuration

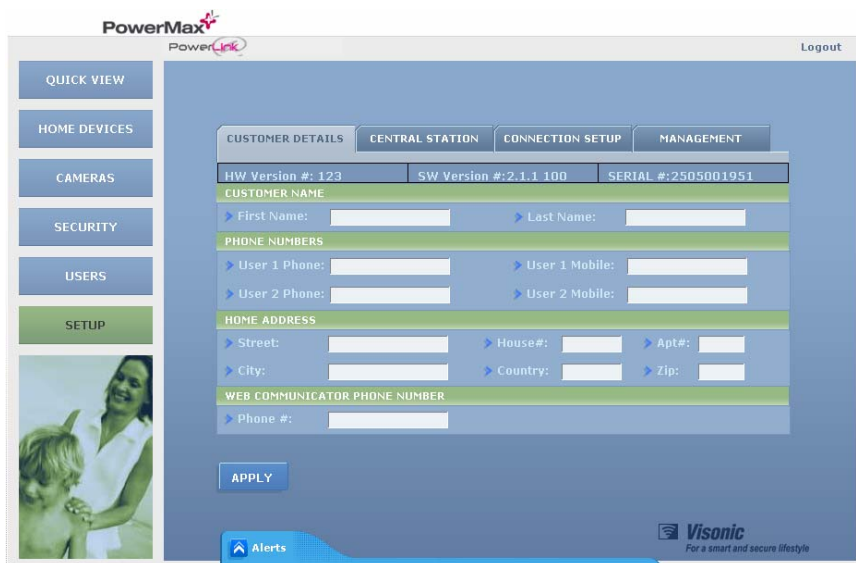


Important

Only the Master user can access the Setup view and manage the system configuration.

Customer Details

Customer details are entered during system installation. If you have the proper authorization (Master User) you can edit these details at any time.



Customer details include the following:

- **Customer Name** – The name of the PowerLink owner.
- **Phone Numbers** - Where the customer can be reached by the Central Station customer service (main /alternative including cell phone).
- **Home Address** – Address where the system is installed
- **Visonic PowerLink ID** - The ID of the Visonic PowerLink. The ID is used to identify the house when connecting from a remote computer.

➤ **To edit customer details:**

1. Display the Setup view.
2. Make sure the **CUSTOMER DETAILS** tab is active.
3. Edit customer details according to your needs.
4. Click **APPLY**.

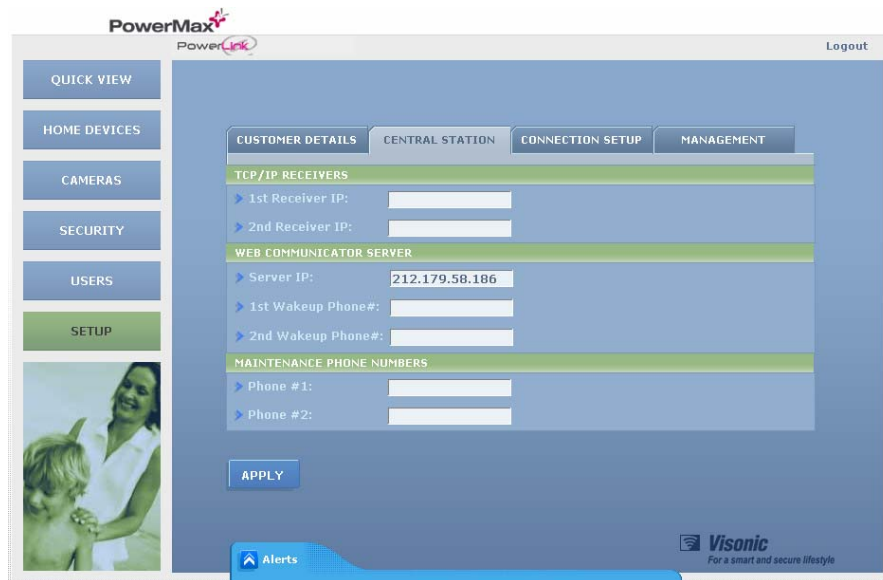
Central Station

Central Station information includes the following:

- **Server IP** – The IP address of the VDNS server that hosts the PowerLink service.

Only an authorized installer should fill in these parameters.

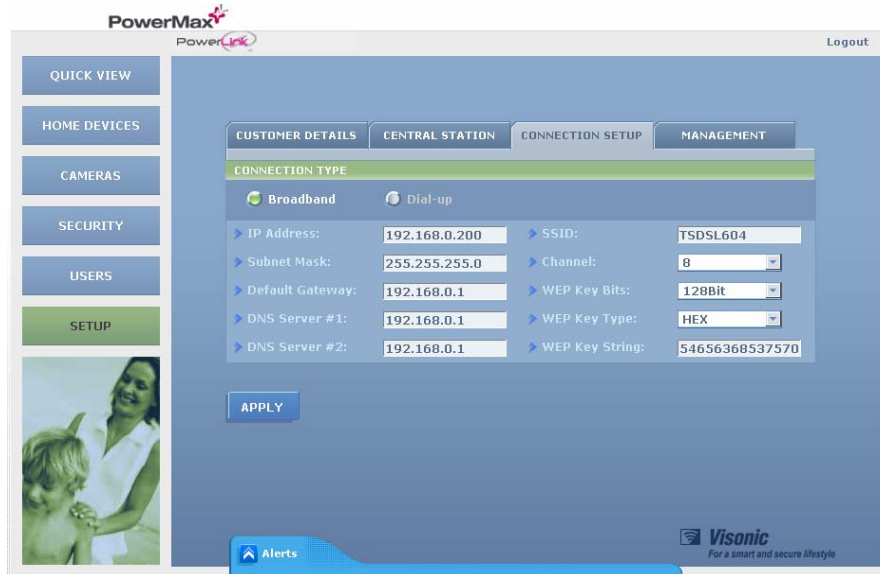
The Central Station tab of the Setup view displays Central Station information.



Connection Setup

Communication parameters that define the way that the Visonic PowerLink is connected to the Router as well as Wi-Fi related parameters.

Connection setup parameters are entered during system installation. An authorized user (Master user) can change them if so required.



IP related parameters are:

- **IP Address** – The IP address of the Visonic PowerLink
- **Subnet Mask** – The subnet mask used with the IP Address
- **Default Gateway** – The default gateway of the network
- **DNS Server** – The IP address of the DNS server

Wi-Fi related parameters are used to enroll the CAM2000WL cameras to the Wi-Fi network. There parameters include:

- **SSID** – Network name.
- **Channel** – The channel being used on the network
- **WEP Key Bits** – The number of bits used for the encryption key
- **WEP Key String** – The key used to encrypt the information on the Wi-Fi network.


Resetting to Factory Settings

It is possible to reset the Visonic PowerLink to its Factory Settings. Resetting the Visonic PowerLink to its factory settings will remove all the enrolled cameras, defined users and defined names and types of Home Devices.

Upon reset, the Master user is reset to the default username and password of the Visonic PowerLink.

➤ ***To reset the Visonic PowerLink to it's factory settings:***




1. In the Management TAB, click .
2. Close the Browser and wait for the Visonic PowerLink to restart.
3. Login using the default username (Admin) and password (Admin123) (see Chapter 3: Logging Into The Visonic PowerLink on page 18).

Viewing the PowerMax+ Log

System events, alerts and alarms, are written to the PowerMax+ log. The PowerMax+ log event information includes the time and date of the event, event location and a description of the event.

In order to view the PowerMax+ log, select the Management tab. In the management

Tab, click  .



The screenshot shows the PowerMax+ web interface. On the left is a navigation menu with buttons for QUICK VIEW, HOME DEVICES, CAMERAS, SECURITY, USERS, and SETUP. The main area is titled 'GENERAL SETUP >' and contains several tabs: CUSTOMER DETAILS, CENTRAL STATION, CONNECTION SETUP, and MANAGEMENT. The MANAGEMENT tab is active, displaying a table of log events. At the bottom of the interface, there is an 'Alerts' button and the Visonic logo with the tagline 'For a smart and secure lifestyle'.

LINE#	DATE	TIME	ZONE#	EVENT DESCRIPTION	LOCATION
1	01.01.2000	12:00:01	0	Control Panel Tamper	Control Panel
2	01.01.2000	12:00:06	0	Control Panel Low Battery	Control Panel
3	01.01.2000	12:00:01	0	Control Panel Tamper	Control Panel
4	01.01.2000	12:00:06	0	Control Panel Low Battery	Control Panel
5	01.01.2000	12:00:16	0	Installer Programming	Control Panel
6	01.01.2000	12:00:27	0	General Restore	Control Panel
7	01.01.2000	12:00:27	0	System Reset	Control Panel
8	01.01.2000	12:00:27	0	Control Panel Tamper	Control Panel
9	01.01.2000	12:00:32	0	Control Panel Low Battery	Control Panel
10	01.01.2000	12:00:58	0	Telephone Line Failure	Control Panel
11	01.01.2000	12:03:29	0	Installer Programming	Control Panel

Glossary

Alarm

An alarm situation is initiated when an alarm trigger is being sent from one of the detectors attached to the alarm system. Different detectors types can be:

- **PIR** – Detect motion in the zone (room) where they are installed.
- **Door contact** – Detects the opening of a door or a window.
- **Glass Break** – Detects a glass breaking event.
- **Fire** – Detects a fire situation.
- **Flood** – Detects a flood situation
- **Gas** – Detects a leak of gas.
- **Emergency / Panic** – Two buttons located on the control panel or keypads of the security system. Once being pressed by the owner, an emergency alarm is initiated.

Alert

Alerts indicate trouble events in the security system control panel or in the accessories. Once an alert situation occurs, it will not affect the security system's behavior immediately but it should be fixed as soon as possible. Alert events include the following:

- **Tamper Open** – One of the security system accessories is open or removed from the wall.
- **Inactivity** – One or more of the security system accessories has lost connection with the control panel.
- **Low Battery** – One of the security system accessories has a low battery situation.
- **Communication Failure** – The control panel is disconnected from the phone line.
- **RF Jamming** – The RF transmission of the control panel is being jammed.
- **Power Fail** – The control panel is disconnected from the mains.

Arming

The security system has different arming modes in which the security system acts differently as a result of a trigger being sent from the detectors:

- **Arm Away** – The AWAY mode indicates that the house is empty (although pets may remain in the house if proper detectors are installed). In this arming mode, any trigger from any of the detectors is immediately treated by the security system as an Alarm situation.
- **Arm Home** – The HOME mode indicates that the house is partially occupied. This mode is usually used during night hours in which some of the detectors are to be ignored since the house members might move in the areas where these detectors are installed during the night. In this mode, the security system treats all the detectors that are assigned to perimeter zones as immediate alarm initiators and to all detectors assigned to interior zones as non-alarm initiators.
- **Disarm** – The DISARM mode is usually used when the house is occupied during day hours. During this mode, none of the detectors will be treated as alarm initiators except for detectors that are assigned to a 24 Hour zone (such as a safe room) in which any trigger must be an alarm initiator.
- **Arm Bypass / Home Bypass** – The ARM BYPASS and HOME BYPASS arming modes are used to arm the security system even if some of the detectors are troubled or in "Open" status that indicates detection. Once armed, the security system will ignore any triggers from the detectors that were troubled or "Open" when the security system was armed. Use these arming modes with caution as when being used, some parts of the house are not secured even when the security system is armed.

Central Station

A monitoring station capable of receiving alarm indications from security systems. Central stations usually alert the police or send their own guards to a house that is alarmed in order to verify the alarm and potentially apprehend the intruder or take care of the alarm situation (fire, gas, flood, etc.)

Control Panel

The control panel is the main unit of a security system. It collects information from various detectors and responds in various ways such as sounding a siren or calling the central station or the home owner.

Latchkey

The Latchkey mode is a special mode in which designated "latchkey users" trigger a "latchkey message" to be sent to a telephone or a pager when they disarm the system. For example, if a parent wants to be sure that their child has returned from school and disarmed the system, they will assign a Latchkey user to the child. Refer to the security system's user manual in order to find out how to enable the Latchkey function.

Port Forwarding

IP addresses of computers connected to a LAN are called Unregistered IP Addresses whereas IP Addresses of computers or devices connected to the WAN are called Registered IP Addresses. Computers with an Unregistered IP addresses (such as the Visonic PowerLink) cannot communicate with computers or devices with a Registered IP addresses (such as the computer in your office) directly.

The Port Forwarding feature enables computers with a Registered IP address (such as your office computer) to access services on computers with an Unregistered IP Address (such as the Visonic PowerLink). This is done by mapping ports on the router so each request arriving to the router at a specific port is routed to the computer that hosts the service on the LAN.

Not all Home Router manufacturers use the term "Port Forwarding". Alternative terms you may find in your Home Router can be: "Port Redirection", "Virtual Servers" and "Applications and Gaming".

Home Router

A router is a device that connects two networks. The network within the house is considered a LAN (Local Area Network). To enable Internet access from a LAN, a connection to the WAN (Wide Area Network) has to be established using a router. Routers enable all users in a network (LAN) to share a single connection to the Internet or a WAN.

Two main technologies are used to provide high-speed Internet connections to private houses. The first is called DSL or ADSL and the other is Cable.

In order to provide a Broadband Internet connection to the house, a device called a Modem is installed in your house. Every device in the house that needs to be connected to the Internet has to be connected to the DSL/Cable modem. Most DSL/Cable modems have only one port for connecting a device within the house to the Internet. In most cases (but not all) your computer is connected to this port.

If you have more than one device within the house that need to be connected to the Internet you are required to attach a home networking device called a Home Router to the DSL/Cable Modem. The home router enables connecting multiple devices to the Internet at the same time via one DSL/Cable modem. The WAN (Wide Area Network) port of the Home Router connects to the DSL/Cable modem. Devices that need to be connected to the Internet are connected to the LAN (Local Area Network) ports of the Home Router. All LAN and WAN ports are called Ethernet ports and are connected via an RJ-45 connector.

Wi-Fi (Wireless LAN)

Standard home routers require Ethernet cables between the devices connected to the Internet and the router. The "Wi-Fi" or "Wireless LAN" technology enables a wireless connection between the devices and the home router. Some routers have the Wi-Fi features built in. In others, the Wi-Fi feature can be added by attaching a Wi-Fi "Access Point" to the home router. Routers with Wi-Fi and Wi-Fi access points can be easily identified by one or two Antennas located on the backside of the home router or Wi-Fi access point.

Product Limitations

Our wireless systems are very reliable and are tested to high standards. However, due to their low transmitting power (required by FCC, DTI and other regulating authorities) there are some limitations to be considered:

- A.** Receivers may be blocked by radio signals occurring on or near their operating frequencies, regardless of the code selected.
- B.** A receiver can only respond to one transmitted signal at a time.
- C.** Wireless equipment should be tested regularly (at least once a week) to determine if there are sources of interference and to protect against faults.

WARNING: Changes or modifications to this unit not expressly approved by the party responsible for compliance could void the user's authority to operate the equipment.

NOTE: This equipment has been tested and found to comply with the limits for a Class B digital device, pursuant to part 15 of the FCC Rules. These limits are designed to provide reasonable protection against harmful interference in a residential installation. This equipment generates, uses and can radiate radio frequency energy and, if not installed and used in accordance with the instructions, may cause harmful interference to radio communications. However, there is no guarantee that interference will not occur in a particular installation. If this equipment does cause harmful interference to radio or television reception, which can be determined by turning the equipment off and on, the user is encouraged to try to correct the interference by one or more of the following measures:

- Reorient or relocate the receiving antenna.
- Increase the separation between the equipment and receiver.
- Connect the equipment into an outlet on a circuit different from that to which the receiver is connected.
- Consult the dealer or an experienced radio/TV technician for help.

VISONIC LTD. (ISRAEL): P.O.B 22020 TEL-AVIV 61220 ISRAEL. PHONE: (972-3) 645-6789, FAX: (972-3) 645-6788

VISONIC INC. (U.S.A.): 65 WEST DUDLEY TOWN ROAD, BLOOMFIELD CT. 06002-1376. PHONE: (860) 243-0833, (800) 223-0020. FAX: (860) 242-8094

VISONIC LTD. (UK): FRASER ROAD, PRIORY BUSINESS PARK, BEDFORD MK44 3WH. PHONE: (0870) 7300800
FAX: (0870) 7300801

INTERNET: www.visonic.com

© VISONIC LTD. 2005 POWERLINK USER MANUAL DE5471U (VERSION 1, 10/05)